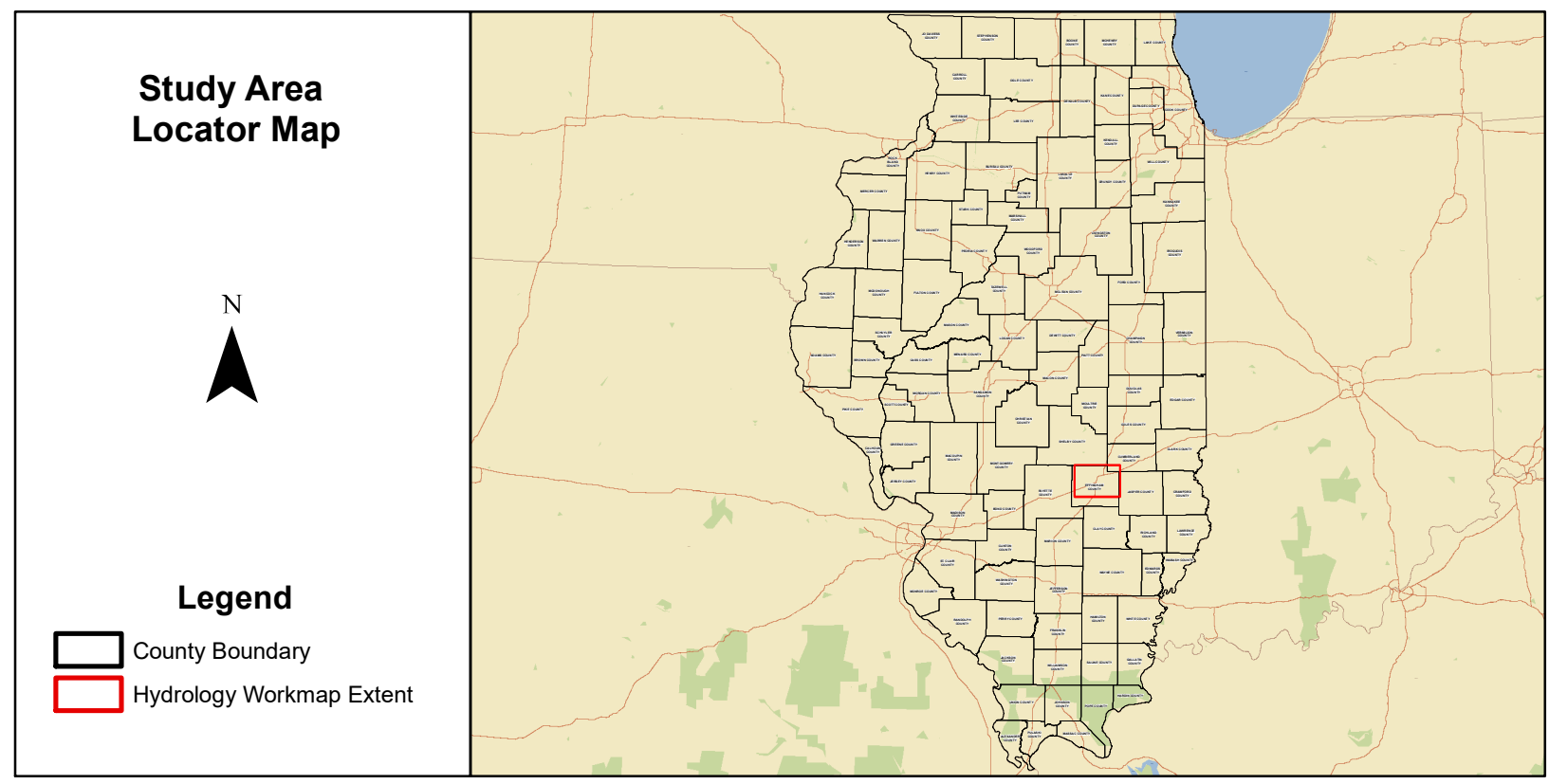
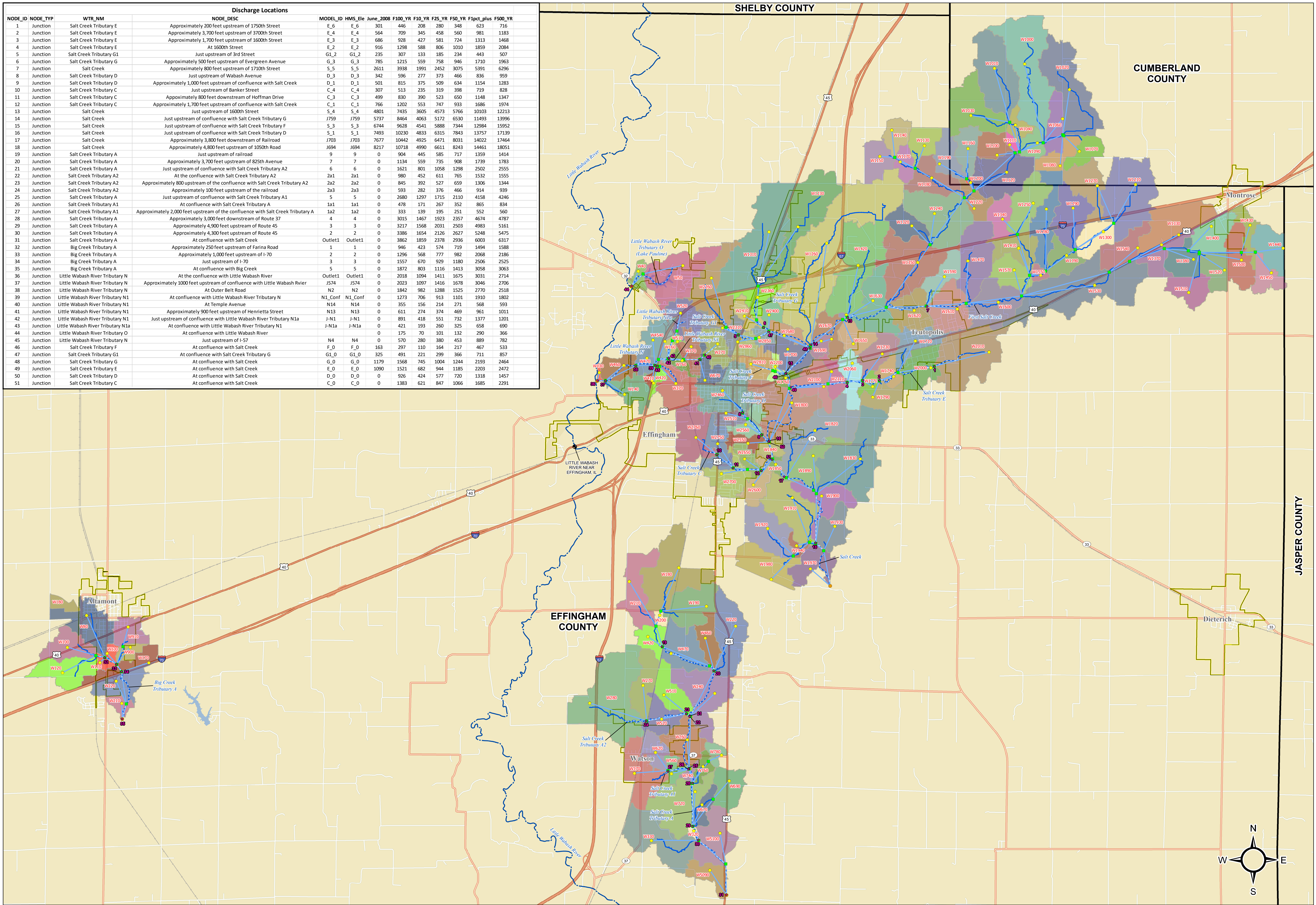


Discharge Locations												
NODE_ID	NODE_TYP	WTR_NM	NODE_DESC	MODEL_ID	HMS_Ele	June_2008	F100_YR	F10_YR	F25_YR	F50_YR	F1pct_plus	F500_YR
1	Junction	Salt Creek Tributary E	Approximately 200 feet upstream of 1750th Street	E_6	E_6	301	446	208	280	348	623	716
2	Junction	Salt Creek Tributary E	Approximately 3,700 feet upstream of 3700th Street	E_4	E_4	564	709	345	458	560	981	1183
3	Junction	Salt Creek Tributary E	Approximately 1,700 feet upstream of 1600th Street	E_3	E_3	686	938	427	581	724	1313	1468
4	Junction	Salt Creek Tributary E	At 1600th Street	E_2	E_2	916	1298	588	806	1010	1859	2084
5	Junction	Salt Creek Tributary G1	Just upstream of 3rd Street	G1_2	G1_2	235	307	133	185	234	443	507
6	Junction	Salt Creek Tributary G	Approximately 500 feet upstream of Evergreen Avenue	G_3	G_3	785	1215	559	758	946	1710	1963
7	Junction	Salt Creek	Approximately 800 feet upstream of 1710th Street	S_5	S_5	2611	3938	1991	2452	3075	5391	6296
8	Junction	Salt Creek Tributary D	Just upstream of Wabash Avenue	D_3	D_3	342	596	277	373	466	836	959
9	Junction	Salt Creek Tributary D	Approximately 1,000 feet upstream of confluence with Salt Creek	D_1	D_1	501	815	375	509	634	1154	1283
10	Junction	Salt Creek Tributary C	Just upstream of Banker Street	C_4	C_4	307	513	235	319	398	719	828
11	Junction	Salt Creek Tributary C	Approximately 800 feet downstream of Hoffman Drive	C_3	C_3	499	830	390	523	650	1148	1347
12	Junction	Salt Creek Tributary C	Approximately 1,700 feet upstream of confluence with Salt Creek	C_1	C_1	766	1202	553	747	933	1686	1974
13	Junction	Salt Creek	Just upstream of 1600th Street	S_4	S_4	4801	7435	3655	4573	5768	10103	12123
14	Junction	Salt Creek	Just upstream of confluence with Salt Creek Tributary G	J759	J759	5737	8464	4063	5172	6530	11493	13996
15	Junction	Salt Creek	Just upstream of confluence with Salt Creek Tributary F	S_3	S_3	6744	9628	4541	5888	7344	12984	15952
16	Junction	Salt Creek	Just upstream of confluence with Salt Creek Tributary D	S_1	S_1	7493	10230	4833	6315	7843	13757	17139
17	Junction	Salt Creek	Approximately 3,800 feet downstream of Railroad	J703	J703	7677	10442	4925	6471	8031	14022	17464
18	Junction	Salt Creek	Approximately 4,800 feet upstream of 1050th Road	J694	J694	8217	10718	4990	6611	8243	14461	18051
19	Junction	Salt Creek Tributary A	Just upstream of railroad	9	9	0	904	445	585	717	1359	1414
20	Junction	Salt Creek Tributary A	Approximately 3,700 feet upstream of 825th Avenue	7	7	0	1134	559	735	908	1739	1783
21	Junction	Salt Creek Tributary A2	Just upstream of confluence with Salt Creek Tributary A2	6	6	0	1621	801	1058	1298	2502	2555
22	Junction	Salt Creek Tributary A2	At the confluence with Salt Creek Tributary A2	2a1	2a1	0	980	452	611	765	1532	1555
23	Junction	Salt Creek Tributary A2	Approximately 800 upstream of the confluence with Salt Creek Tributary A2	2a2	2a2	0	845	392	527	659	1306	1344
24	Junction	Salt Creek Tributary A2	Approximately 100 feet upstream of the railroad	2a3	2a3	0	593	282	376	466	914	939
25	Junction	Salt Creek Tributary A	Just upstream of confluence with Salt Creek Tributary A1	5	5	0	2680	1297	1715	2110	4158	4246
26	Junction	Salt Creek Tributary A1	At confluence with Salt Creek Tributary A	1a1	1a1	0	478	171	267	352	865	834
27	Junction	Salt Creek Tributary A1	Approximately 2,000 feet upstream of the confluence with Salt Creek Tributary A	1a2	1a2	0	333	139	195	251	552	560
28	Junction	Salt Creek Tributary A	Approximately 3,000 feet downstream of Route 37	4	4	0	3015	1467	1923	2357	4674	4787
29	Junction	Salt Creek Tributary A	Approximately 4,900 feet upstream of Route 45	3	3	0	3217	1568	2031	2503	4983	5161
30	Junction	Salt Creek Tributary A	Approximately 4,300 feet upstream of Route 45	2	2	0	3386	1654	2126	2627	5248	5475
31	Junction	Salt Creek Tributary A	At confluence with Salt Creek	Outlet1	Outlet1	0	3862	1859	2378	2936	6003	6317
32	Junction	Big Creek Tributary A	Approximately 250 feet upstream of Farina Road	1	1	0	946	423	574	719	1494	1588
33	Junction	Big Creek Tributary A	Approximately 1,000 feet upstream of I-70	2	2	0	1296	568	777	982	2068	2186
34	Junction	Big Creek Tributary A	Just upstream of I-70	3	3	0	1557	670	929	1180	2506	2525
35	Junction	Big Creek Tributary A	At confluence with Big Creek	5	5	0	1872	803	1116	1413	3058	3063
36	Junction	Little Wabash River Tributary N	At the confluence with Little Wabash River	Outlet1	Outlet1	0	2018	1094	1411	1675	3031	2714
37	Junction	Little Wabash River Tributary N	Approximately 1000 feet upstream of confluence with Little Wabash River	J574	J574	0	2023	1097	1416	1678	3046	2706
38	Junction	Little Wabash River Tributary N	At Outer Belt Road	N2	N2	0	1842	982	1288	1525	2770	2518
39	Junction	Little Wabash River Tributary N1	At confluence with Little Wabash River Tributary N	N1_Conf	N1_Conf	0	1273	706	913	1101	1910	1802
40	Junction	Little Wabash River Tributary N1	At Temple Avenue	N14	N14	0	355	156	214	271	568	593
41	Junction	Little Wabash River Tributary N1	Approximately 900 feet upstream of Henrietta Street	N13	N13	0	611	274	374	469	961	1011
42	Junction	Little Wabash River Tributary N1	Just upstream of confluence with Little Wabash River Tributary N1a	J-N1	J-N1	0	891	418	551	732	1377	1201
43	Junction	Little Wabash River Tributary N1a	At confluence with Little Wabash River Tributary N1	J-N1a	J-N1a	0	421	193	260	325	658	690
44	Junction	Little Wabash River Tributary O	At confluence with Little Wabash River	0	0	0	175	70	101	132	280	366
45	Junction	Little Wabash River Tributary N	Just upstream of I-57	N4	N4	0	570	280	380	453	889	982
46	Junction	Salt Creek Tributary F	At confluence with Salt Creek	F_0	F_0	163	297	110	164	217	467	533
47	Junction	Salt Creek Tributary G1	At confluence with Salt Creek Tributary G	G1_0	G1_0	325	491	221	299	366	711	857
48	Junction	Salt Creek Tributary G	At confluence with Salt Creek	G_0	G_0	1179	1568	745	1004	1244	2193	2464
49	Junction	Salt Creek Tributary E	At confluence with Salt Creek	E_0	E_0	1090	1521	682	944	1185	2203	2472
50	Junction	Salt Creek Tributary D	At confluence with Salt Creek	D_0	D_0	0	926	424	577	720	1318	1457
51	Junction	Salt Creek Tributary C	At confluence with Salt Creek	C_0	C_0	0	1383	621	847	1066	1685	2291



**ILLINOIS**  
 Illinois State Water Survey  
 PRAIRIE RESEARCH INSTITUTE

**Legend**

- ★ Discharge Locations \*
- Junction \*
- Sink \*
- Subbasin \*
- Stream Gage \*\*\*\*
- Hydraulic Model Profile Baseline \*\*
- Little Wabash River Water Line \*\*
- Reach Line \*
- Hydrologic Model Baseline \*
- ⬢ Corporate Boundary \*\*\*
- ⬢ County Boundary \*\*\*

**Metadata:**  
 Basemap Sources: Esri, HERE, DeLorme, TomTom, Intermap, increment P Corp., GEBCO, USGS, FAO, NPS, NRCAN, GeoBase, IGN, Kadaster NL, Ordnance Survey, Esri Japan, METI, Esri China (Hong Kong), Swisstopo, MapmyIndia, OpenStreetMap contributors, and the GIS User Community  
 \* Revised Analysis Provided by ISWS  
 \*\* Profile Baselines - Extracted from HEC-RAS model via HEC-GeoRAS for ArcGIS Desktop 10.6.1  
 \*\*\*\* Provided by the United States Census Bureau  
 \*\*\*\*\* Provided by the United States Geological Survey (USGS)  
 All Elevations are in NAVD 88 vertical datum  
 This Map was designed to be printed at 36" x 30"  
 Coordinate System: NAD 1983 HARN StatePlane Illinois East FIPS 1201 Feet  
 Datum: North American 1983 HARN  
 Projection: Transverse Mercator  
 False Easting: 984,250.0000  
 False Northing: 0.0000  
 Central Meridian: -88.3333  
 Scale Factor: 1.0000  
 Latitude Of Origin: 36.6667  
 Units: Foot US  
 The technical content of the map is the responsibility of the authors. The user assumes all liability for the interpretation and use of the map.

**Effingham County, Illinois Hydrology Workmap**

Date: 9/26/2019

Scale: 1:42,000  
 1 in = 3,500 ft

0 3,500 7,000 14,000 21,000 28,000 Feet

*Draft* *Draft*